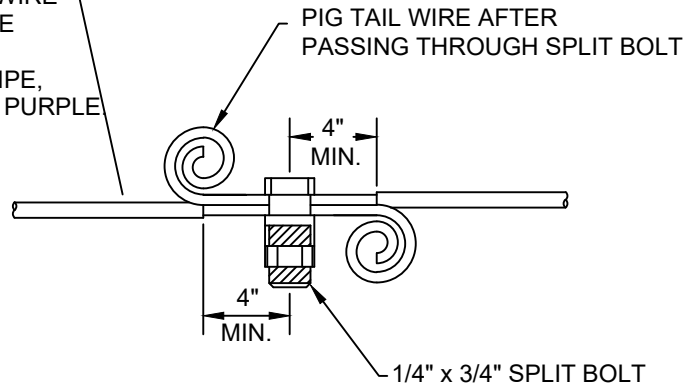


#10 THW LOCATING WIRE  
(SOLID COPPER WIRE  
WITH COATING)  
COLOR TO MATCH PIPE,  
IE., BLUE, GREEN OR PURPLE



NOTES:

1. THE ENDS OF ALL LOCATING WIRES, WHETHER THEY ARE SPLICED, CONNECTED, OR TERMINATED, SHALL HAVE THE LAST THREE INCHES PIG TAILED AS DETAILED.
2. ANY PLACE THE PROTECTIVE COATING HAS BEEN REMOVED IT SHALL BE WRAPPED WITH ELECTRICAL TAPE THEN WRAPPED WITH DUCT TAPE.
3. AFTER INSTALLATION OF THE LOCATING WIRE THE SYSTEM SHALL BE SUBJECTED TO TESTING, IN THE PRESENCE OF CITY UTILITIES STAFF PRIOR TO BACKFILL, IN ORDER TO CONFIRM THAT THE SYSTEM IS FUNCTIONAL.

## LOCATING WIRE SPLICING

NOT TO SCALE



**LEESBURG**  
*The Lakefront City*

**City of Leesburg**  
**Standard Details**

2024

Detail G-5